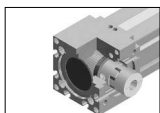
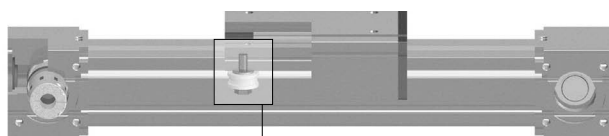
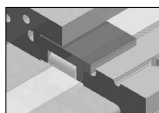


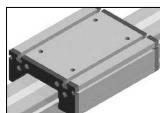
MC series



- Easy maintenance
- Long lifetime
- Easy mounting with various mounting holes.

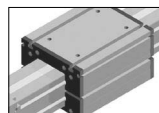


- Built-in belt and stainless steel cover for dust proof.



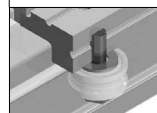
MC 60/80/100
Standard slider block

- * Various length of slider based on customer's needs are available.

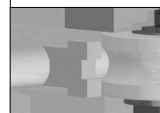


MC 60/80/100-D

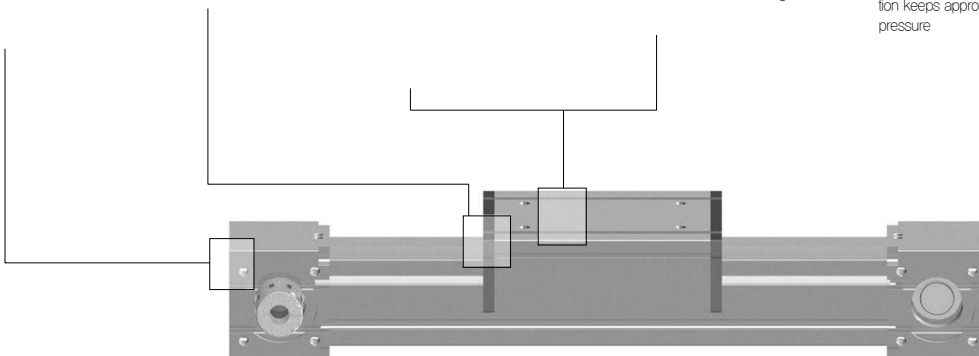
- Slider on the top and bottom
- More suitable for heavy payload
- Suitable for fixing slider and moving rail

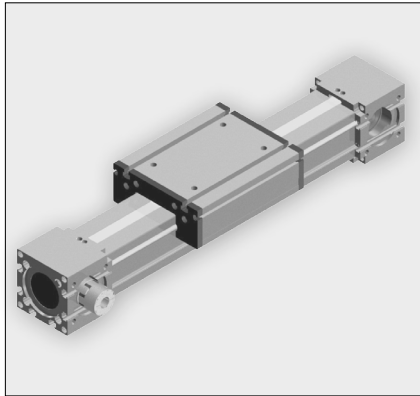


- Silent operation with high quality bearing steel shaft
- Preventing abrasion with chrome plated bearing steel
- Special bolts combination keeps appropriate pressure



- Felt wiper prevents stiffening after long time of operation
- Spring inside of seal keeps certain level of frictional resistance





Features

- Track roller guide & belt type unit & cover
- Belt operating module with dust proof structure
- Various axis combination
- High tensile timing belt
- Customized optoin
- Easy maintenance

How to order

MC 60 S — 600 — 0100 — C — D3 — E2 —

① ② ③ ④ ⑤ ⑥ ⑦ ⑧ ⑨ ⑩

① Series

② **Model**
60 / 80 / 100

③ Slider option

S : Standard(4 roller bearings)
T : S + 2 additional bearings
H : S + 4 additional bearings
* Please contact us for additional quantity of slider

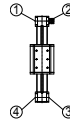
④ Stroke (Unit : mm)

60 : 100 ~ 1800
80 / 100 : 100 ~ 2000
* Please contact us for longer stroke than standard

⑤ Drive version (0:Standard,1:Coupling type)

Pully direction	TYPE		MODEL	
	Pully shape	60	80	100
1000		●	●	●
1100		●	●	●

* Please contact us for customized pulley type



⑥ Color

Blank : White (outer)
B : Black (outer)

⑦ Sensor (dog included)

Blank : None
C : Photo sensor + Basic socket – Basic 3EA
CJ : C + Cable socket2M – Basic 3EA
Other than basic : C(J)(Qty) Example)C2,CJ2

⑧ Mounting bracket

Blank : None
D(Q'ty) : Necessary quantity. Example)D2,D3

⑨ Bracket of reducer (including coupling)

Blank : None

SYMBOL	TYPE			MODEL		
	SIZE	60	80	100		
E1	42	●				
E2	62	●				
E3	90		●			
E4	120			●		

Basic option : ATG, APLUS, SESAME

⑩ Customized code

Sensor

Model	Item number	Sensor and connector
60	SX671-PL	 EE-SX671 + EE1001
80		
100		
60	SX671-L-PL	 EE-SX671 + EE1006
80		
100		

Sensor dog

Model	Item number	Remarks
60	PDG-M60-PL	EE-SX671 only
80	PDG-M80-PL	
100	PDG-M100-PL	

Sensor bracket

Model	Photo sensor for single	Photo sensor for double
60	PSBS-60-PL	PSBD-60-PL
80	PSBS-80-PL	PSBD-80-PL
100	PSBS-100-PL	PSBD-100-PL

Mounting bracket

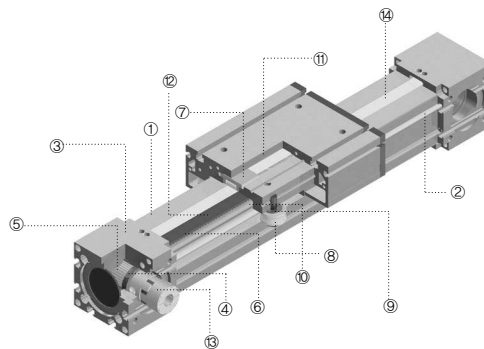
Model	Item number	Remarks
60	MBK60-PL	
80	MBK80-PL	
100	MBK100-PL	

MC specifications

Specification	MC60	MC80	MC100
Max speed (mm/s)	2000	2000	2000
Payload (kgf)	30 (horizontal)	50 (horizontal)	100 (horizontal)
Stroke (mm)	Max. 1800	Max. 2000	Max. 2000
Repeatability (mm)	± 0.05	± 0.05	± 0.05
Diameter of pulley (mm)	∅ 25.46	∅ 41.38	∅ 50.93
Pulley action perimeter (mm/rev)	80	130	160
No load torque (Nm)	0.5	0.7	1.2
Belt	RPP5 / W25	RPP5 / W25	RPP8 / W30
Track roller guide	S:4 roller bearing standard T:S type + 4 roller bearing		
Basic weight (kgf)	5.1	13.2	29.0
Weight per 100mm stroke (kgf)	0.5	1.2	1.8
Motor (W)	200	400 ~ 750	750
Size (mm, W x H)	60 x 90	80 x 121	100 x 155

Note) Customized options are available.

MC structure



► Components list

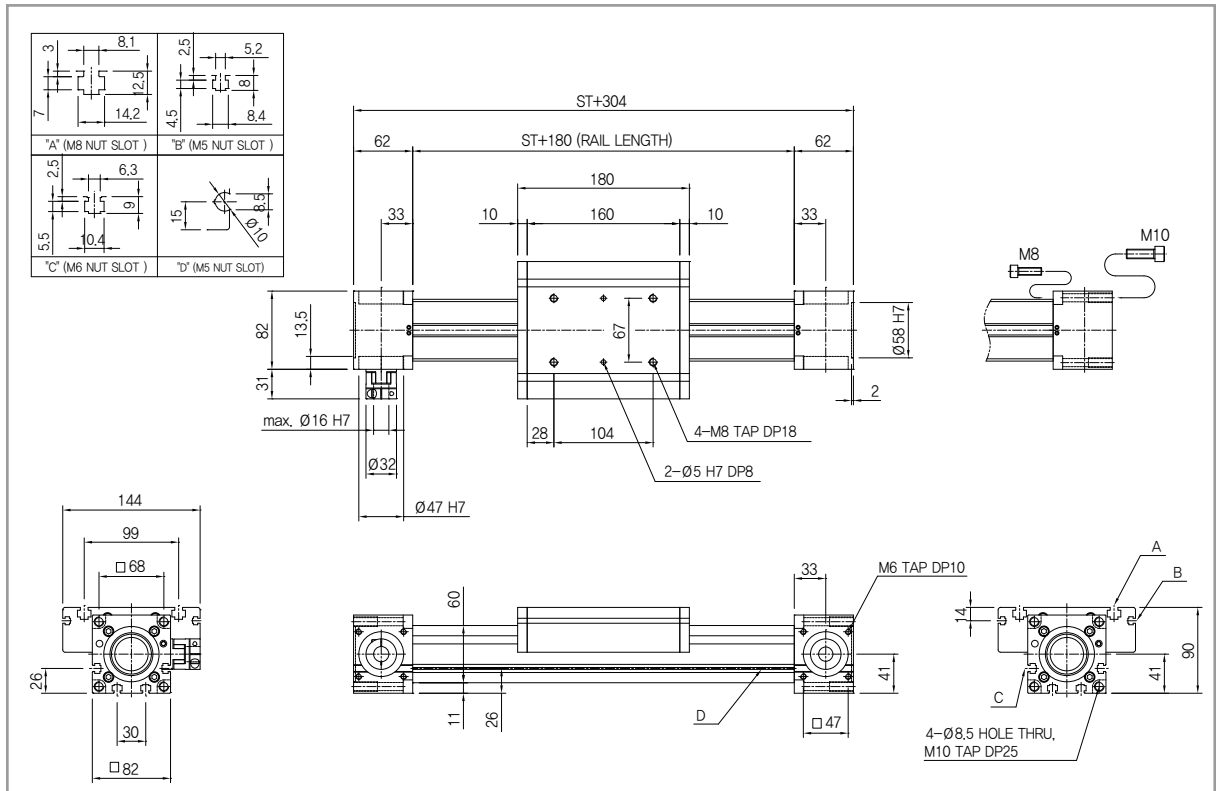
No	Component name		Material	No	Component name	Material
1	Rail		Aluminum alloy	8	Track roller	Bearing steel
2	Model	Shaft		9	Washer	
	60	∅10				
	80	∅12				
	100	∅16				
3	Pulley box		Aluminum alloy	10	Wiper	FELT
4	Bearing			11	Sealing	EP
5	Timing pulley		High carbon steel	12	Belt clip	Carbon steel
6	Timing belt		Urethane	13	Coupling	Aluminum alloy
7	Slide block		Aluminum alloy	14	Steel cover	Stainless steel

MC 60

Basic specifications

Model	Stroke (mm)	Gear Ratio	Speed (mm/s)	Motor (W)	Max. Payload(kg)	
					Horizontal(0.3G)	Horizontal(0.5G)
MC60	100~1800	10	400	200	30	25
		5	800		20	18

MC60



- Please contact us to change sensor or motor options.
- Customized tap or pin pitch on the bottom is available.

Weight & speed for each stroke

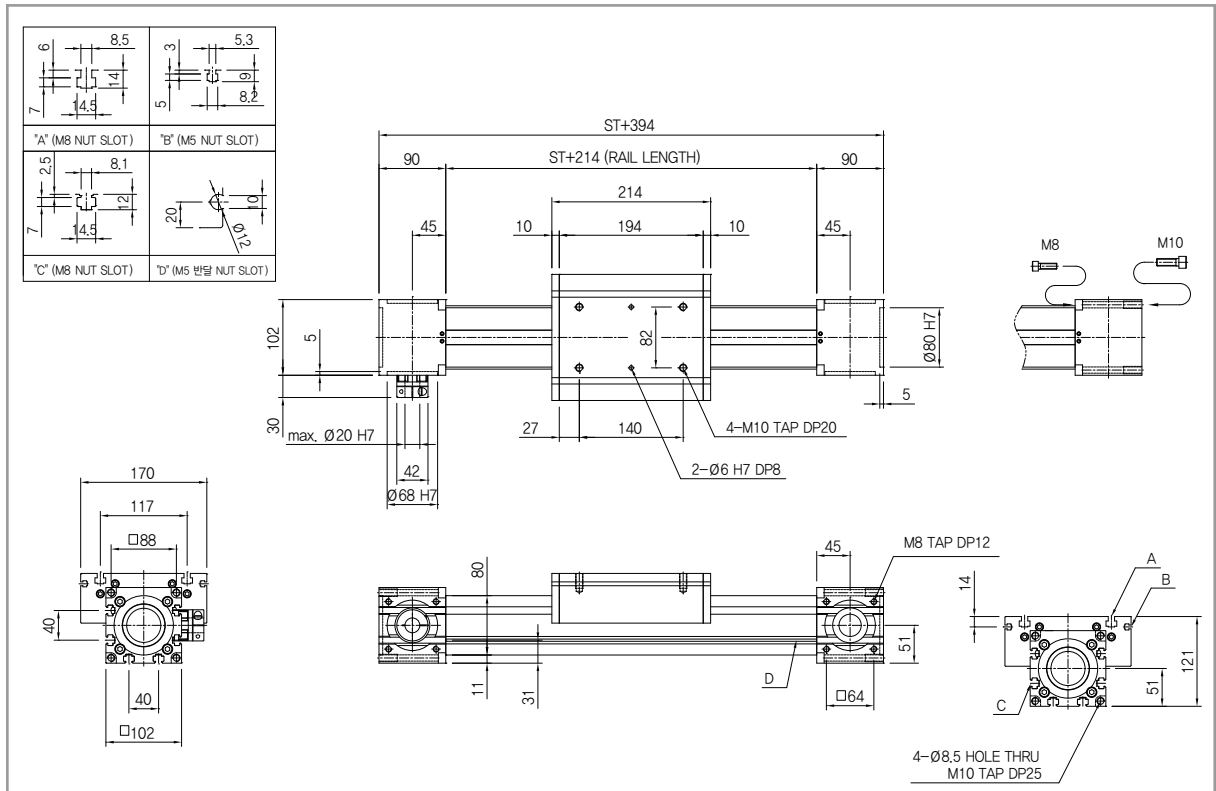
Stroke(mm)	1000	1100	1200	1300	1400	1500	1600	1700	1800	1900	2000	2500	3000	3500	4000	4500	5000	Model
Weight(kg)	10.1	10.6	11.1	11.6	12.1	12.6	13.1	13.6	14.1	14.6	15.1	17.6	20.1	22.6	25.1	27.6	30.1	MC60

Note) The weight of motor and reducer is not included.

Basic specifications

Model	Stroke (mm)	Gear Ratio	Speed (mm/s)	Motor (W)	Max. Payload(kg)	
					Horizontal(0.3G)	Horizontal(0.5G)
MC80	100~4000	10	650	400	50	40
		5	1300	750	40	35

MC80



- Please contact us to change sensor or motor options.
- Customized tap or pin pitch on the bottom is available.

Weight & speed for each stroke

Stroke(mm)	1000	1100	1200	1300	1400	1500	1600	1700	1800	1900	2000	2500	3000	3500	4000	4500	5000	Model
Weight(kg)	25.2	26.4	27.6	28.8	30.0	31.2	32.4	33.6	34.8	36.0	37.2	43.2	49.2	55.2	61.2	67.2	73.2	MC80

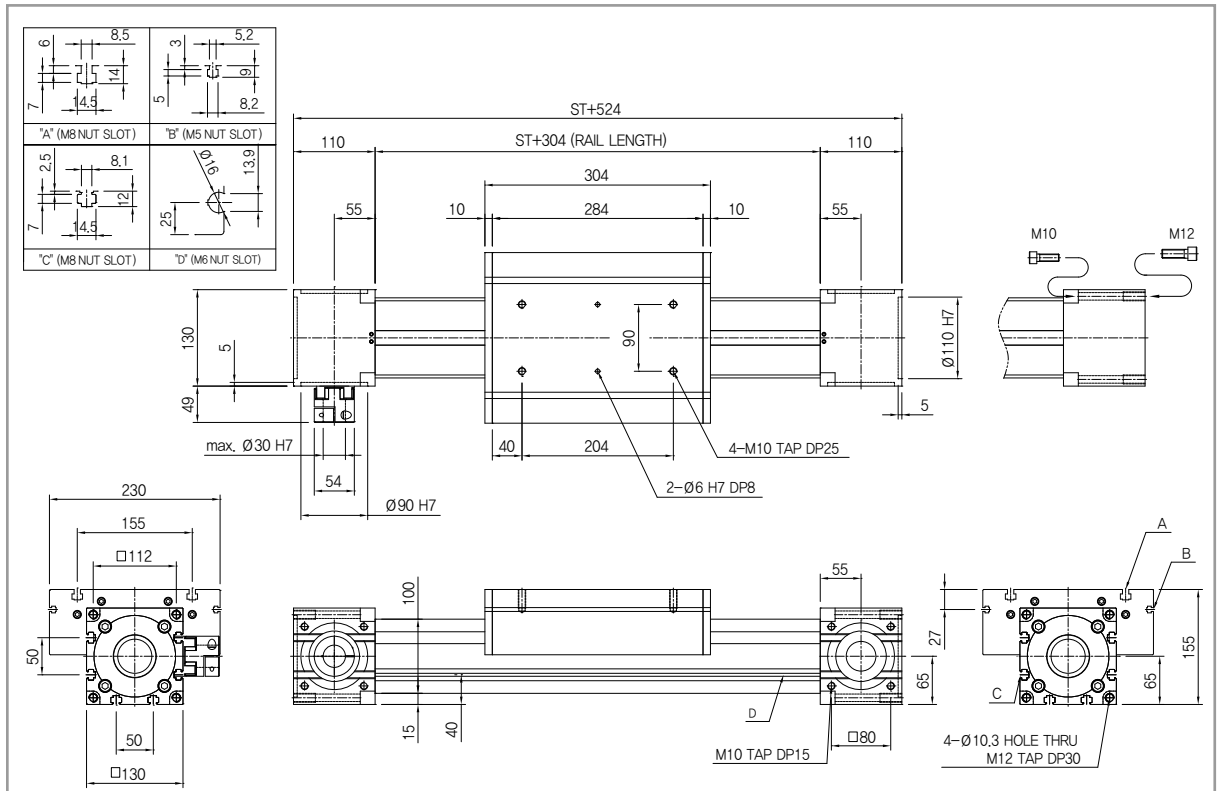
Note) The weight of motor and reducer is not included.

MC 100

Basic specifications

Model	Stroke (mm)	Gear Ratio	Speed (mm/s)	Motor (W)	Max. Payload(kg)	
					Horizontal(0.3G)	Horizontal(0.5G)
MC100	100~2000	20	400	750	100	90
		10	800		90	80
		5	1600		40	35

MC100



- Please contact us to change sensor or motor options.
- Customized tap or pin pitch on the bottom is available.

Weight & speed for each stroke

Stroke(mm)	1000	1100	1200	1300	1400	1500	1600	1700	1800	1900	2000	2500	3000	3500	4000	4500	5000	Model
Weight(kg)	47.0	48.8	50.6	52.4	54.2	56.0	57.8	59.6	61.4	63.2	65.0	74.0	83.0	92.0	101.0	110.0	119.0	MC100

Note) The weight of motor and reducer is not included.